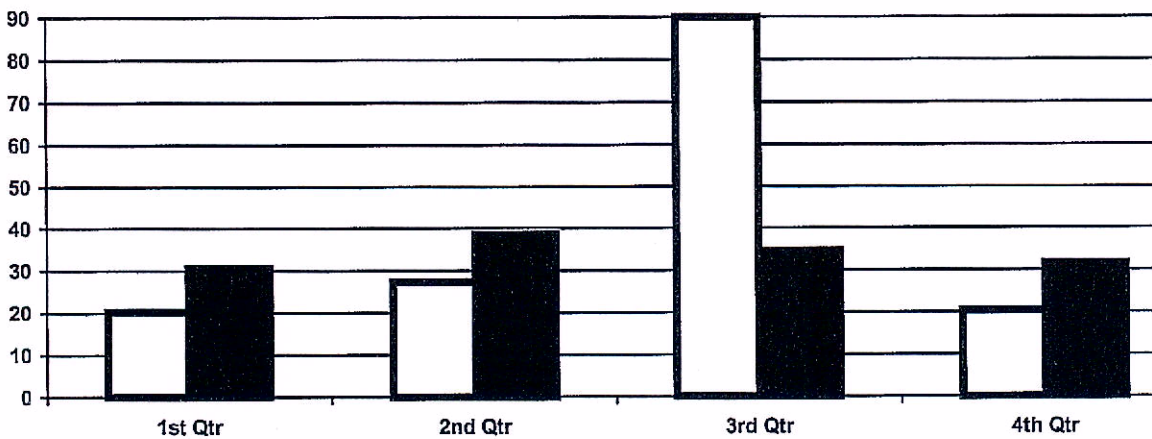


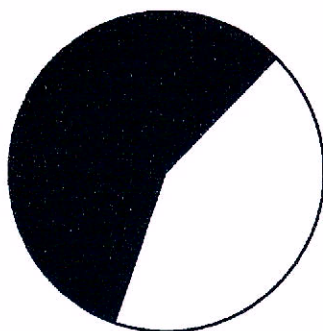
ANALYSIS: TRENDS IN BUSINESS

As a leader in the information imaging industry, Widget Company places great importance on Research & Development. Central to all R & D activities is our "Customer Must Be Satisfied" corporate policy. Thus, all our research aims at developing new and innovative products that are efficient, compact, easy-to-use, high in quality and enviro-friendly. Widget pays particular attention to matching the most advanced technological developments with the precise needs of our customers.

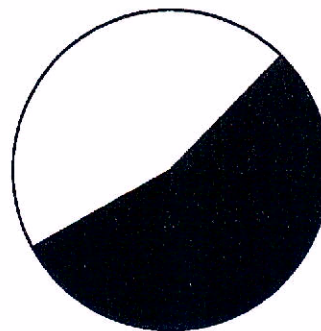


Our customer-oriented philosophy is wedded with a focus on the creation of a wide array of sophisticated products that link our traditional technology with leading edge digital information processing technology.

This technology, which has the advantage of being able to network various media with the latest in computer communication and design technology, has worked its way into the printing industry and is now spreading into the photographic industry. Our product's superiority is also evident in a diverse range of consumer products and will undoubtedly form the base of information technology for many years to come.



□ 1st Qtr
■ 2nd Qtr



■ 3rd Qtr
□ 4th Qtr

In recognition of these fast-paced developments, Widget is determined to retain the lead in information processing and, in fact, we have already developed an extensive selection of products that use digital technology. The Widget Ultra System, designed to record scanned images directly onto compact MD Data discs, is a prime example. The system consists of several components; an MD Writer which can multiple varieties of media input images onto the discs; an MD Editor which allows the editing and manipulation of the images; and an MD Image Scanner for scanning photographic prints and printed matter. It is possible for the user not only to store images electronically, but also to edit the images into various formats, including index prints, and easily database for at-will retrieval.

5.2 CIELab / sRGB Rich Gray Chart

The gray chart on the previous page is printed either by K-only or by rich black CMYK. Desktop printers print mostly by K-only.

The printer can be forced to print by rich black CMYK if the values RGB are slightly different. Here we have added 1 unit of 255 to the B channel. The gray is not accurate, but good enough for a gray balance test.

